

The Piedmont Rotarian

ROTARY DISTRICT 7690 • FEBRUARY 2008 • DISTRICT GOVERNOR'S NEWSLETTER

"Rotary Shares"

Dave McCoy, 2413 Addison Blvd., High Point, NC 27262



Dave McCoy

February is World Understanding

Month. Our Rotary Foundation has a focus of humanitarian grants, but they also have grants that provide for world understanding, realizing this is extremely important to our future world. A couple of weeks ago I had the opportunity to spend some time at our Ambassadorial and GSE training seminar for Zone 33. We had six outbound scholars and five GSE members in attendance. Our district has more outbound scholars than any of the 13 other districts in Zone 33. These scholars will help build the bridge to world understanding.

The Group Study Exchange outbound team is working hard preparing for their departure in March. They have partnered with a group of Taiwanese students at UNC-Greensboro to help them prepare for a journey of a lifetime. This is a great example of sharing as these students meet weekly with our team.

Our RYLA or Rotary Youth Leadership Award application process is well underway and I encourage all clubs to participate in this wonderful opportunity for our youth. Please read the article in this newsletter about one amazing young man who has been awarded an International RYLA spot. He was selected from thousands of applications to be in a small class of 150. Joseph Terrell is also the first person from our district to receive this high honor.

Reversing a membership trend of the past couple of years, our district membership has shown gains for the first six months. This is due to the efforts of our clubs' members who realize that the future of Rotary is dependent on getting new members who will become excited and energized about Rotary and what Rotarians do to make our communities and world better.

We need to get the word out about Rotary and we are doing just that. Due to the efforts of our District Public Relations Chair, Tracy Brooks, we have been awarded a \$6,000 grant from Rotary International to work with Time Warner Cable. Please read the adjoining article for all the wonderful information on this campaign.

DGE Charles Allen has just returned from San Diego, CA and a week of intense training to become our District Governor in 2008-09. I know Charles, with his wife by his side, will lead our District in exemplary fashion. However, we still have a lot to do for the remainder of this year and know we will do whatever it takes to finish this year with our strong Rotary passion.

Rotary District 7690 Receives PR Grant from Rotary International

District 7690 recently submitted an application and was awarded a \$6,000. Public Relations Grant from Rotary International focusing on a new media partnership with Triad Time Warner Cable.

Time Warner Cable has offered a generous schedule to support our PR efforts and they have been a very proactive partner in helping our district. (The Triad Time Warner Cable coverage area is closely aligned with the geography of our district making them an excellent partner for this program.)

Our presence on TWC will include a mix of 30 second spots. TWC will produce local Public Service Announcements focusing on our Group Study Exchange and Interact programs, as well as a general community service spot. We will also blend in commercials from a new campaign produced by Rotary International. The program will begin airing on February 4 on a variety of Time Warner Cable networks. The campaign will include over 1,000 spots that will air in 2008.

The District 7690 Media and Public Relations plan is intended to raise awareness among business leaders and the community to:

- Increase involvement and awareness in Rotary programs such as Group Study Exchange and Interact.

- Encourage existing member involvement in Rotary projects and opportunities thereby increasing the participation and funds available for service projects and other programs.

- Create positive exposure for our clubs and increase community awareness and membership interest for Rotary throughout the district.

Special recognition for the success of this effort is extended to District Governor David McCoy (High Point), GSE chair Tim Albertson (Gate City), Youth Services Co-Chair Cory Newton (Greensboro Airport) and incoming DG Charles Allen (Randolph).

--Tracy Brooks, District Public Relations Chair

Selection of the 2010 Council on Legislation Representative

According to Rotary International: "Representatives for the 2010 Council on Legislation must be elected in the Rotary year two years preceding the Council." Clubs in our district can now nominate a representative for the 2010 Council on Legislation. Nominations will be taken from the clubs until March 1. After March 1, the clubs will be notified of the nominees. A vote will be taken at the 2008 District Conference to determine the representative and the alternate.

The nominee according to the Rotary Bylaws in the Manual of Procedure must be "...a Rotarian who has served a full term as an officer of RI at the time of their election. Such member must be a member of a Rotary club in the district represented. (RIB 8.020)."

Per Monica Wamat, council Services for RI: "The RI Board of Directors encourages districts to select as representatives the best qualified eligible Rotarians who are well-informed about current Rotary policies, procedures and programs. Representatives should be selected on the basis of their ability to carry out the representatives' defined duties and not on the basis of their personal popularity. The role of representative should be viewed as a serious and responsible position and not simply as a benefit of having served as governor. Furthermore, care should be taken to ensure the selected representative can meet the physically and mentally demanding circumstances of the Council. The representative should be prepared for a long and challenging meeting."

There are two changes that were adopted by the 2004 Council that affect the nomination and election of the representatives. The RI Bylaws (Section 8.050) allows a qualified Rotarian may be nominated by *any club* in the district. When the votes are taken at the 2008 District Conference, the candidate must get the *majority* of votes cast to be elected (RI Bylaws, Section 8.050.4) The 2007 Council also directs that after the representative is elected, another ballot is necessary to select the alternate representative.

FRIENDSHIP EXCHANGE to TAIWAN

Rotary District 7690 in the Piedmont area of North Carolina recently completed a Rotary Friendship Exchange with Rotary District 3460 in Taichung, Taiwan. This visit is the result of a relationship that blossomed between the two districts over the past three years.

Each year Rotary Districts around the world pair up for an annual Group Study Exchange, in which four young non-Rotarians and a Rotarian group leader from each District visit the other District to experience the host country's institutions and ways of life, observe their vocations as practiced abroad, develop personal and professional relationships, and exchange ideas. In the spring of 2006, District 7690 partnered with District 3460 Taichung for such a Group Study Exchange experience.

This Group Study Exchange proved so successful that District 3460 Taichung awarded a \$25,000 scholarship to a student from District 7690 to study in Taiwan; the first such scholarship awarded by a foreign country to a District in the southeast US. This scholarship was awarded to Greensboro resident Lily Kuo, who is presently studying in Dunghai University. Ms. Kuo is a recent graduate of the University of North Carolina.

In addition, District 3460 Taichung proposed that the two districts participate in a Friendship Exchange, which is similar to a Group Study Exchange except that Rotarians participate. Last fall, five Rotarians and their spouses from District 3460 Taichung visited North Carolina and had the opportunity to experience the Piedmont, including the Asheboro Zoo, the changing colors of the leaves, and a weekend in a mountain cabin in western North Carolina.

This past October the exchange was completed when four people from District 7690 Piedmont NC traveled to Taiwan to get the same immersion in the life of residents of District 3460 Taichung that the team from Taiwan got when they visited North Carolina last year. The group experienced the crowding of the population into the relatively small area of flat land near the west coast as contrasted with the vast area of relatively uninhabited mountains in the center of the country. They visited an historic seacoast town of Lukang, Changhua and stayed in the country home of a Rotarian which came complete with its own Buddhist temple. They visited the historic Snake Kiln, a pottery kiln museum in Shui-Li owned by Kuolong Lin, whose daughter Noopa Lin is a high school Rotary Youth Exchange student studying in Greensboro this year. But mostly they experienced the friendliness and hospitality of the people, who provided them with endless eight course meals and bottomless cups of tea. "In America," the hosts observed, "you show off your homes. In Germany, they show off their cars. In China we show off our food."

Traveling to Taiwan were Past District Governor Phil Morris, Karen Morris, 2006 Group Study Exchange Team Leader Owen George, whose knowledge of Mandarin was greatly appreciated by those travelers who did not speak the language, and Robin Breedlove.

Pictured in the front row are Past District Governor of District 3460 Tiger Ku and his wife Genny, Karen Morris, Phil Morris, Robin Breedlove, and Owen George. The back row contains various Rotarians from District 3460. Exchange scholar Lily Kuo from Greensboro is the last person on the right in the second row.



This spring District 7690 will send another Group Study Exchange team to Taiwan. This time the exchange will be with District 3500 Maoli, Hsinchu and Taoyuan.

2008 DISTRICT CONFERENCE VENUE STAR OF THE SOUTH

Located in the foothills of the North Georgia Mountains, **Chateau Elan Winery, Resort and Spa** is an outstanding venue for our 2008 Rotary District Conference. Spanning 3,500 acres Chateau Elan combines French Provincial with Southern hospitality that *Meetings South* recently named as their meeting planner's favorite conference resort and Star of the South.

This AAA Four Diamond resort was recognized for delivering extraordinary services and quality. Allow me to share some of the outstanding features of the hotel voted the "most romantic in Georgia."

- * Newly renovated guest rooms feature comfortable beds, oversized bathtubs and separate showers. Coffee makers, hairdryers, and fluffy robes add to the comfort of each room. Large work desks and high speed wireless internet assist the business minded.
- * **Chateau Elan Spa** is a full service European-style day spa that spans 33,000 square feet and features 14 unique guest suites, 36 treatment rooms, spa cuisine at Fleur de Lis Restaurant and a gift shop.
- * **Chateau Elan's** three outstanding golf courses considered among the finest in Georgia and the Executive Par 3 course will please any level of golfer. The Zagat Survey listed the Chateau and Woodlands Courses in America's Top Golf Courses with ratings from Very Good to Excellent! Our Rotary tournament will be played on the Chateau course on Friday and we will have a Glo-Ball fun event on the Executive Par 3 course on Thursday evening.
- * Casual and Fine Dining is available at **Chateau Elan** offering eight specialty restaurants. Choices range from Classic French to International to Southern Regional to All-American including classic Irish fare at the authentic Paddy's Irish Pub. The food is outstanding and live music can be enjoyed most any evening. The breakfast buffet at the Versailles Restaurant is one of the best you will experience and is included in our convention plan.
- * **Chateau Elan Winery** designed in the 16th century style of a French Chateau is surrounded by lush vineyards and may invoke images of the Loire Valley of France. Opened in 1985, the full-production Winery inside the Chateau is the largest producer of premium wines in Georgia, and recognized by Wine Spectator for exceptional vintages. There are two restaurants in the Winery, Cafe Elan a bistro and Le Clos for fine French dining plus a Wine Market and Art Gallery for shopping. You may also enjoy a winery tour and tasting.

Registration materials are printing as I write this article and will be mailed to all the last week of January.

We fully expect this year's conference to be a complete sellout with the incredible lineup of events, speakers and entertainment that are scheduled.

Mark your calendars now for April 24-27, 2008.

Visit our conference web site: <http://www.rotary7690conference.com>
and go ahead and register today!

Sharing Rotary is
PEACHY
at Chateau Elan



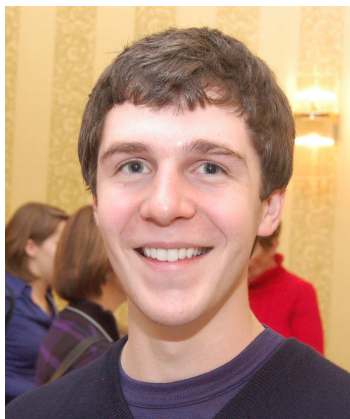
Rotary Youth Leadership Program

The 2008 Rotary Youth Leadership Program will be held July 11-19, 2008 at Guilford College. The program, sponsored by the Greensboro Rotary Club, in cooperation with the Center for Creative Leadership in Greensboro, is in its twenty-sixth year. The program provides 54 selected high school juniors and seniors throughout Rotary District 7690 - which includes much of the Triad region - an opportunity to develop effective and responsible leadership skills.

The program will be held again on the Guilford College campus, using the college's dormitory, cafeteria, and recreational facilities. David Barnwell and Susan Apple of the Greensboro Rotary Club are the program directors. Outstanding North Carolina college students who are alumni of the program will serve as staff Leadership Advisors. Other program staff will include professionals from the Center for Creative Leadership and representatives of the business and professional community. Prominent state and local leaders will visit, speak to the participants, and assist the students in assessing their career goals.

Each participant will be nominated by his or her high school principal, reviewed by a local Rotary Club Selection Committee, and selected by the program's Executive Committee. Participation will not be restricted by race, gender, religion, or national origin.

All participants will be sponsored by local Rotary Clubs for the entire cost of the program, including room and board. Each nominee must demonstrate leadership experience, must maintain a "B" average in school, and must be a rising junior or senior in high school. Interested students should contact their high school principals or their local Rotary Clubs for more information.



Joseph Terrell

Joseph Terrell, from High Point Central High School, was one of 150 selected to attend a Rotary Youth Leadership Conference in Los Angeles in June 2008. Joseph was nominated by the Rotary Club of Furnitureland and was selected by Rotary International for the scholarship. He will represent District 7690, David McCoy, District Governor. Joseph is the Interact Club's project coordinator at High Point Central, and was a participant in the World Affairs Seminar in Whitewater, Wisconsin. Joseph is the son of Tom and Gaither Terrell of High Point.

(Background edited from RI promotional material)

THE 2008 INTERNATIONAL RYLA

Established as a Rotary Structured Program in 1971, Rotary Youth Leadership Awards is Rotary's leadership program for young people. At the local level, RYLA participants can be ages 14-30, but most clubs and districts choose to focus on a narrower age range. RYLA emphasizes leadership, citizenship, and personal growth through intensive training programs that often take the shape of a seminar, workshop, or camp.

The International RYLA was first launched in 2001, immediately preceding the Rotary International Convention in San Antonio, Texas USA. The event was designed for participants, ages 18-30, to learn advanced leadership techniques common to the RYLA program through guest speakers, training sessions and group discussions, as well as have the opportunity to collaborate and network with exceptional youth from across the world. Due to the success of this event, the RI Board adopted the International RYLA as an official preconvention event in February 2003.

This year brings the sixth International RYLA event, building on a series of exciting and successful meetings with a truly global perspective. This year's International RYLA will take place from June 12-15 in Los Angeles, California.

THE 2008 PROGRAM

Throughout the program, participants will have the opportunity to meet other exceptional young leaders from across the world while learning advanced leadership techniques through training exercises. While breaking-out into smaller groups, participants will also explore and discuss current issues and topics pertinent to leadership in a global society.

The core content of the program will include a focus on some of the RI Presidential emphases, such as health and hunger, literacy, and water, as well as peace and conflict resolution and ethics in an international context.

Participants at the International RYLA are drawn from a diverse group of young people who have been involved in Rotary youth programs and have been recommended by their district governor. Eligible individuals are between the ages of 18-30 and cannot be Rotarians.

Attendance for December 2007

CLUBS	MEMBERS AS OF 6/30/07	CURRENT MEMBERS	MONTHLY MEETINGS	MONTHLY % ATTEND	CLUB ID NUMBER
*Alamance	53	51	3	54	6090
*Alamance Bkft	27	28	3	80	23238
*Archdale/Trinity	29	28	3	40	29135
*Asheboro	115	107	3	58	6052
*Burlington	22	21	3	89	6092
*Carthage	21	17	3	63	6053
*Clemmons	134	137	4	74	29530
**Crescent	114	113	3	79	6056
*Deep River	8	9	4	67	51358
*East Greensboro	17	18	3	54	55569
*Eden	34	36	3	64	6058
*Furnitureland	51	60	3	76	6059
**Gate City	59	62	2	96	27995
*Graham	37	36	2	59	6107
*Greensboro	314	324	3	63	6060
*Gboro Arpt	39	41	3	82	31667
*Guilford	59	64	3	68	22059
*High Point	167	168	3	72	6062
*Jamestown	21	24	3	72	6063
**Jonesboro	56	59	3	59	22882
*Kernersville	71	70	3	77	25027
*King	20	22	4	67	51294
*Lexington	49	48	3	69	6065
*Liberty	21	21	2	78	6066
*Madison/Mayodan	40	40	3	74	6067
*Mocksville	47	51	3	63	6069
*Mount Airy	106	108	3	61	6070
*Pinehurst	35	38	2	78	6072
*Randolph	81	83	3	73	6074
*Reidsville	67	65	3	76	6075
Reynolda	109	109	2	56	21534
*San Lee	26	31	6	88	30735
**Sandhills	40	41	3	81	25530
**Sanford	51	50	3	57	6078
*Siler City	57	60	3	79	6079
*Southern Guilford	12	12	3	70	61795
*Southern Pines	68	74	4	84	6080
*Stoneville	18	17	3	70	6081
*Stratford	122	119	2	63	6082
*Summit	120	116	2	79	6083
Surry Sunrise	37	37	3	76	57326
*Thomasville	76	75	3	88	6084
*Triad	40	39	2	84	6071
*Troy	33	30	3	67	6085
*Walnut Cove	19	21	4	74	6087
**Willow Creek	17	13	2	66	60367
Winston-Salem	251	253	3	49	6088
Yadkin Valley	39	37	3	78	30000
*Yadkinville	20	20	3	75	51333
*Yanceyville	18	17	2	63	6134
DISTRICT	3087	3120		71%	

*100% Paul Harris Fellow Club

**Triple Crown Club

District 7690 Calendar [Click Here](#)



The Piedmont Rotarian

Rotary District 7690 Office 114
Willoughby Park Dr., High
Point, NC 27265
www.Rotary7690.org
www.Rotary.org
Artwork: Shelley Graphics 2008